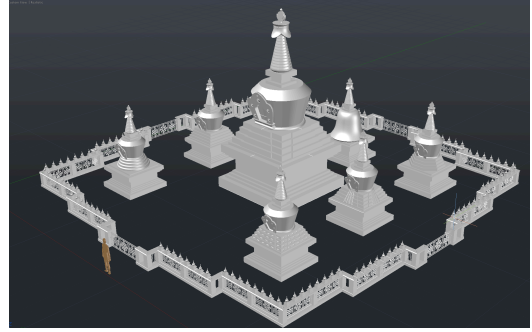




*Red Dorje Drolu Stupa Mandala
Today*



Stone Stupa



*Artist's Rendition of Completed
Mandala*

At Pema Osel Ling (Lotus Land of Clear Light), a Buddhist retreat center in the Santa Cruz Mountains of California, we are installing 128 small, hand-carved stone stupas at our World Peace Stupa Park. One of these sacred works of art has been sponsored in your honor.

Stupas are Buddhist structures that are built according to ancient traditions. They are used as places for meditation and prayer, and due to strong positive intentions and sacred materials, they help heal the environment, reduce illness and negativity and bring peace to strife-torn lands.

You and your loved ones will forever be a part of this sacred place, which will emanate countless blessings and positive energy—a place where generations will visit and pray for world peace and good fortune for all.

We want to share this beautiful prayer written by the revered Buddhist teacher Kyabje Dudjom Rinpoche that is engraved on a plaque at the stupa park:

*“At this very moment for the peoples and nations of the Earth
May not even the names disease, famine, war and suffering be heard.
But rather may harmony, merit, wealth, and prosperity increase,
And may there always be auspiciousness, excellence, and perfect abundance!”*

Wishing you and your loved ones health, happiness and prosperity!

The Red Dorje Drolu Stupa Team